



Lipan Warehouse

*Located at
2200 Lipan Street
near Port and Lipan*

First Building:

Office Space
Warehouse Space

20,620 Gross Sq. Ft.

1,500 +/- Sq. Ft.
19,020 Sq. Ft.

Legal Description :

**Lot 2A Block "B"
Missouri Improvement**

Ceiling Height:

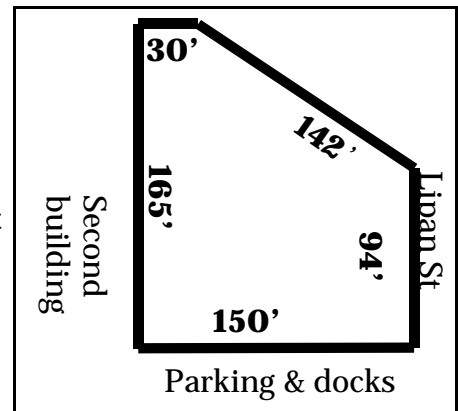
12 feet at eave
16 feet at peak

Docks:

Ramp:

Rail Access:

Two covered truck docks
One ramp with overhead door
Three overhead doors with access



William R. Durrill, Jr., General Manager
Phone: 361/884-8857 Pager: 361/224-4370

